



# GAT MONTHLY MEMBERSHIP PROGRESS REPORT

Results as of: 3/31/2024

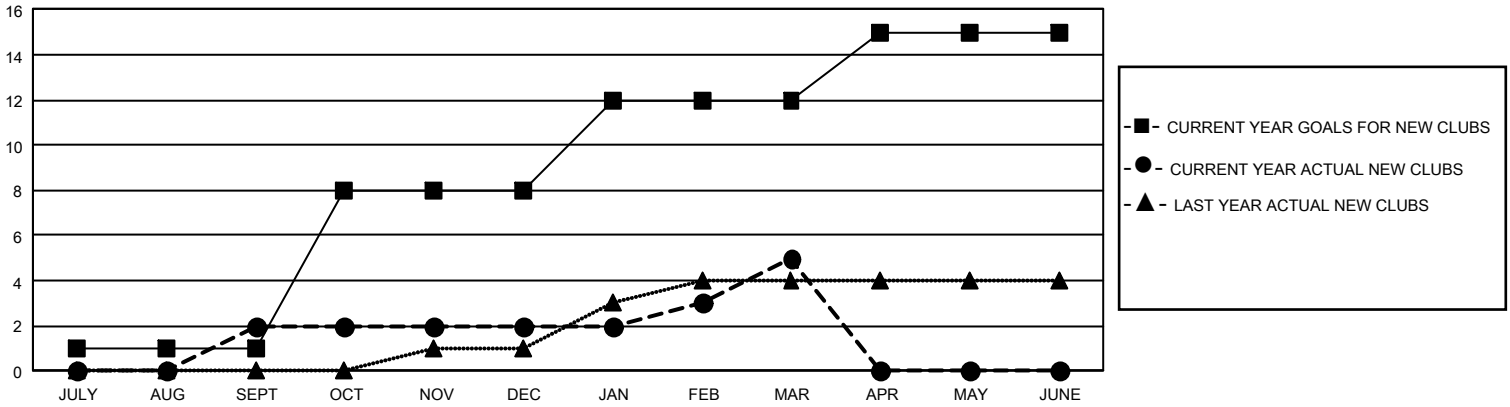
## GMT Constitutional Area 5 - J, Group I

REPORT DOES NOT INCLUDE CLUBS IN UNDISTRICTED AREAS.

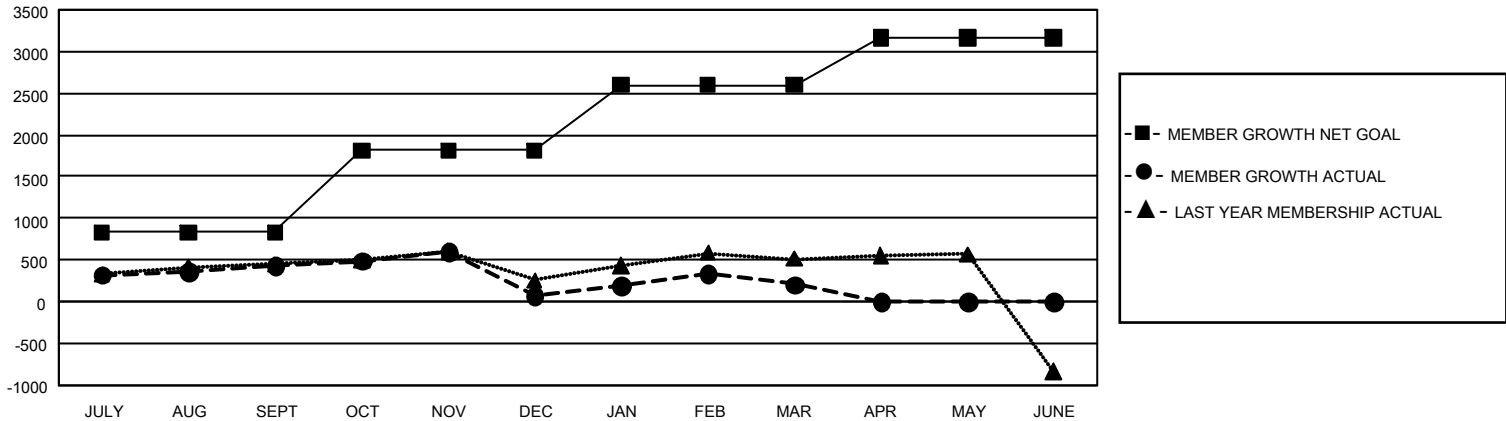
Clubs			
RESULTS FOR 2023-2024			
QUARTER	NEW CLUB GOAL	NEW CLUBS	DROPPED CLUBS
JULY/AUG/SEPT	3	2	3
OCT/NOV/DEC	21	0	5
JAN/FEB/MAR	12	3	0
APR/MAY/JUNE	9	0	0

Members			
RESULTS FOR 2023-2024			
QUARTER	MEMBER GROWTH NET GOAL	MEMBER GROWTH ACTUAL	DROPPED MEMBERS ACTUAL (including transfers)
JULY/AUG/SEPT	830	1,214	702
OCT/NOV/DEC	981	593	928
JAN/FEB/MAR	785	934	741
APR/MAY/JUNE	571	0	0

GOALS AND ACTUAL NEW CLUBS CUMULATIVE



GOALS AND ACTUAL MEMBERS CUMULATIVE



DROPPED CLUBS: 8	804 CLUBS OF 1,124 ADDED 1 OR MORE NEW MEMBERS	<u>GENDER DISTRIBUTION</u>	
		MALE	30,950 (78.07%)
<u>DROPPED MEMBERS</u>		FEMALE	8,688 (21.91%)
DECEASED	242	NON BINARY	0 (0.00%)
CLUB CANCELLED	4	PREFER NOT TO ANSWER	8 (0.02%)
OTHER	2,125	TOTAL FAMILY UNIT MEMBERS	10,291
<b>TOTAL</b>	<b>2,371</b>	FAMILY MEMBERS PAYING HALF DUES	5,597

[CLICK HERE FOR CUMULATIVE MEMBERSHIP DATA](#)